



# DELRAN TOWNSHIP SCHOOL DISTRICT

52 Hartford Rd., Delran NJ, 08075

"dedicated to nurturing a supportive, student-centered environment where all people are treated with dignity and respect"

## Operation: Re-Entry



## School Operations

**MILLBRIDGE  
ELEMENTARY  
SCHOOL**

# School Level Reentry Operations: Millbridge

## Operation 1: General Health & Safety Guidelines Pre-Arrival: Screening Visual Screening

Temperature checks (Students riding the bus): District working with bus company, First Student, to perform temperature checks as kids get on the bus?

Temperature checks (Students not riding bus): Staff stationed at top of bus loop and at carpool area to administer temperature checks to students who walk or are driven to school.

Temperature checks (Staff): All Staff will enter through the main entrance and practice social distancing. Temperature checks will be conducted by nurse, office staff and/or administrator.

# School Level Reentry Operations: Millbridge

## Operation 2: Classrooms, Testing & Therapy Rooms: Physical organization

All Classrooms: Desks 6 feet apart facing Promethean board; Windows and doors open as appropriate. Each student's supplies, such as crayons, pencils, etc., will be kept in their own labeled, plastic containers. No communal supplies will be used. Students will wear masks whenever moving through the classroom. When students are at desks maintaining social distance, masks may be taken off.

Preschool Classrooms: Student tables will be set-up to maintain social distancing with one child per table. Staff will distribute and collect all materials. Classroom will be disinfected between sessions. Shared materials will be disinfected between student use.

# School Level Reentry Operations: Millbridge

## Operation 2: Classrooms, Testing & Therapy Rooms: Physical Organization

Kindergarten and 1st Grade Classrooms: Twelve desks are in each room. Student belongings will be placed on their desk by an adult prior to entry each day. The belongings of students working remotely will be placed on a table. Desks will be sanitized daily.

2nd Grade Classroom: Two desks will be set up in a pair in rows. Desks will be assigned to students based on the day they attend so only ONE child will be seated at a desk in the pairing at any given time. Student belongings will be stored in their desks. Desks will be sanitized daily.

# School Level Reentry Operations: Millbridge

## Operation 2: Classrooms, Testing & Therapy Rooms

Personal Belongings: Coats, umbrellas, hats, bookbags, etc, will be stored in the cubbies. Cubbies will be assigned to two students, but only one student in each pair will be present on any given day. Cubbies will be sanitized nightly.

Handwashing and Sanitizing: Each classroom has a hand sanitizer dispenser and a sink with soap. Numerous opportunities are built into every day for all students to practice good hygiene: upon arrival, before and after snack, before and after lunch/recess and before dismissal. Individuals will also wash their hands after bathroom use or self-care, such as nose blowing.

# School Level Reentry Operations: Millbridge

## Operation 2: Classrooms, Testing & Therapy Rooms

General: Daily cleaning and disinfection of all surfaces will occur nightly. Additional cleaning will occur throughout the day. Bathrooms will be cleaned regularly throughout the day.

Staff will regularly remind students and reinforce good hygiene practices.

Initiatives for public announcements and information regarding ways to promote good hygiene

# School Level Reentry Operations: Millbridge

## Operation 3: Transportation, Arrival and Dismissal

Depending on the route and rider capacity, the probability of social distancing being maintained is highly unlikely. This will require ALL students to wear masks when they are unable to provide 6 feet of distance between themselves and others.

Students to enter the bus and fill the back to front (except for reserved, assigned Kindergarten seats). After students and drivers become accustomed to the procedure (approx. 3-4 days) students assigned the same seat for arrival and dismissal.



# School Level Reentry Operations (Millbridge)

## Operation 3: Transportation, Arrival and Dismissal

Car drop off /Walkers: Starting at 8:50am, staff will meet students in the loop at the carpool lane to perform temperature checks. Students will proceed to the entrance door assigned to their grade level. Students will immediately proceed to their classroom. Numerous staff members will be stationed outside and in the halls to help ensure social distancing and masks will be worn.

Bus riders- Staff will unload buses and monitor the number of students that are moving outside at any given time.

# School Level Reentry Operations (Millbridge)

## Operation 4: Student Flow, Entry, Exit & Common Areas Arrival:

### Egress into the building

Preschool and Kindergarten enter through door 19 (first door after entrance to bus loop)

1st Grade enters through door 1 (main entrance)

Second Grade and students in self-contained program will enter door 2 (gym door)

All hallways will be one way during arrival and dismissal. Color coded markings will be on the sidewalk for students to follow. Kindergarten is pink, 1st grade is yellow, 2nd/self-contained are blue.

Preschool arrival and dismissal occur at the preschool entrance. Arrival and dismissal times are unique to preschool and depend on which session a student attends.

# School Level Reentry Operations (Millbridge)

## Operation 4: Student Flow, Entry, Exit & Common Areas Arrival:

Students will remain in their classrooms throughout the day, except when going outside to recess. If a student receives specialized services, a staff member will accompany the student(s) and monitor movement through the halls.

Students going to the nurse or the main office for early dismissal will be escorted by a staff member.

## Egress out of the building-

Students will utilize the same doors that were used at arrival to exit the building. Staff will monitor social distancing both inside and out of the building.

# School Level Reentry Operations (Millbridge)

## Operation 4: Student Flow, Entry, Exit & Common Areas Arrival: Recess

Weather permitting, recess will take place on the field and black top areas. Recess is in the classroom when weather is inclement.

Each classrooms will be assigned to a designated area for recess. Spray paint, cones and flags will be used to designate each area. Classes will rotate areas throughout the year to ensure all students have similar recess options.

Games and sensory paths are painted onto the blacktop for students to use

No balls or equipment will be used. Students will not be permitted to use the playground equipment, such as swings and slides.

Masks will be worn.

# School Level Reentry Operations (Millbridge)

## Operation 4: Student Flow, Entry, Exit & Common Areas Arrival

### Main Entrance Area for Parents (later arrivals and early dismissals)

- Parents/Guardians signing out students will remain in the vestibule and wear a mask.
- Only one parent will be admitted into the vestibule at a time. Six foot markings will be designated outside for people waiting to enter the building.
- Visitors will use a sanitizer station before using the visitor entry system. System and sanitizing station will be disinfected regularly.

### Main Office

- Other than office staff, only one person will be permitted to be in the main office at any given time.
- Main office staff's work stations will be situated to maintain social distancing.

# School Level Reentry Operations (Millbridge)

## Operation 4: Student Flow, Entry, Exit & Common Areas Arrival (cont'd): Faculty Rooms

- Areas that allow social distancing will be designated in the school for staff to use.
- These areas will be disinfected at regular intervals. Wipes will be available for staff use.
- Staff will maintain social distancing in these areas at all times.

## Copiers

- Bulk copying will be utilized whenever possible.
- Staff will maintain social distancing when waiting for the copier. Each grade will be assigned a specific copier to use.
- Staff are asked to wipe copier touch points down after each use.

# School Level Reentry Operations: Health and Safety (Millbridge)

## Operation 5: Screening, PPE, Response to Students & Staff Presenting Symptoms and PPE:

All students and staff will have their temperature checked daily prior to entering the building. Parents and staff will complete a verification assuring that they are not a risk.

Staff and visitors must wear face coverings unless doing so would inhibit the health of the individual.

# School Level Reentry Operations: Health and Safety (Millbridge)

## Operation 5: Screening, PPE, Response to Students & Staff Presenting Symptoms and PPE:

Students will be asked to wear a mask while in all common areas, hallways, and at recess. Students will also be asked to wear masks when unable to maintain social distancing in the classroom.

Students will be able to remove masks once they are at their desk or table.

Individual plans will be created to address situations when staff or students cannot wear face coverings due to circumstances.

School will provide face coverings when necessary.

PPE can include but is not limited to cloth masks, plastic face guards, gloves, etc.



# School Level Reentry Operations: Health and Safety (Millbridge)

## Operation 5: Screening, PPE, Response to Students & Staff Presenting Symptoms and PPE (cont'd):

Nurse will provide necessary Covid-related training at opening day staff meeting

- Understand signs and symptoms of Covid and coordinate action plan for suspected or positive case
- Health Office examination room will be used to quarantine a child
- Nurse will contact parent/guardian to pick-up immediately

# School Level Reentry Operations: Health and Safety (Millbridge)

## Operation 5: Screening, PPE, Response to Students & Staff Presenting Symptoms and PPE (cont'd):

Nurse, staff and administration will:

Establishment of an isolation space. Students and staff with symptoms related to COVID-19 must be safely and respectfully isolated from others.

Students should remain in isolation with continued supervision and care until picked up by an authorized adult. Follow current Communicable Disease Service guidance for illness reporting. Adequate amount of personal protective equipment (PPE) available, accessible, and provided for use.

Develop methods to assist in contact tracing including records of groups/cohorts, assigned staff, and daily attendance. Continuous monitoring of symptoms.

# School Level Reentry Operations: Health and Safety (Millbridge)

## Operation 5: Screening, PPE, Response to Students & Staff Presenting Symptoms and PPE (cont'd):

Morning announcements will be done daily by Mrs. Lowe (Principal) and Mrs Murphy (Assistant Principal) reinforcing good hygiene practices and ways to reduce the spread of CoVid-19, such as hand washing, wearing masks, social distancing, etc . Signs will be posted throughout the building reinforcing these practices.

## Operation 6: Contact Tracing

Contact tracing will be determined by the township and the district based on CDC and NJDOH guidelines.

# School Level Reentry Operations: Health and Safety (Millbridge)

## Operation 7: Facilities Cleaning Practices

All classrooms, common areas, student desks, and cubbies will be thoroughly cleaned prior to student use.

High touch surfaces, such as door knobs, sinks, etc... will be cleaned by maintenance staff throughout the day.

Lavatories, staff lunch room, and rooms used for related students will also be cleaned throughout the day as necessary.

# School Level Reentry Operations (Millbridge)

Conditions for Learning: Social & Emotional Learning / School Climate and Culture

As always, the social and emotional health and wellbeing of our staff and students is at the forefront of our decisions. These must be addressed before academic learning can successfully occur.

To help promote a sense of community, daily morning meetings, which include a focus on social and emotional learning, will occur. In both the hybrid and full remote formats, this will be available synchronously for all students in the homeroom.

# School Level Reentry Operations (Millbridge)

## Conditions for Learning: Social & Emotional Learning / School Climate and Culture

Social emotional learning activities and curricula have also been incorporated into other subjects, and a significant portion of students' physical education instruction will be centered on this area.

School counselors are available to support students both at school and when working remotely.

We will continue to partner with and utilize community organizations and resources to support families.

The district leadership team and each school's leadership team will work to develop measures that promote self-care and provide support as needed for all staff.

# School Level Reentry Operations (Millbridge)

Conditions for Learning: Academic, Social and Behavioral Supports

Students who have been identified as qualifying for ESL (English as a Second Language) services, Basic Skills, Remedial Reading and Special Education will receive those services.

The District employs, ESL teachers, bilingual Portuguese teachers and a high intensity ESL teachers, full-time reading specialists, basic skills teachers and numerous special education teachers, BCBA's (Board Certified Behavior Analysts), speech therapists, occupational therapists and a physical therapist to support students that qualify for these services.

# School Level Reentry Operations (Millbridge)

## Conditions for Learning: Academic, Social and Behavioral Supports

Criteria for basic skills has been modified to ensure that students who have gaps from the spring will receive necessary support.

PBSIS (Positive Behavior Intervention and Supports) are utilized school-wide to promote social and emotional support and to shape student behavior.

School counselors, social workers, BCBA's, psychologists and learning consultants are available.



# School Level Reentry Operations (Millbridge)

## Conditions for Learning: Multi-Tiered Systems of Support

An RTI (Response for Intervention) system is utilized. Tier I accommodations and supports are available for all students. Tier II and Tier III supports are available to students, as needed.

A rubric is used to determine student eligibility for basic skills and remedial reading.

NJDOE criteria is utilized to determine eligibility for ESL and Special Education services.

An I&RS (Intervention and Referral Services) team is available to help support students who are not responding to intervention and who need additional support. All school-initiated referrals to the child study team are made by this team of educators.

# School Level Reentry Operations (Millbridge)

## Conditions for Learning: Food Services and Distribution

Families are encouraged to utilize pre-packaged and bagged meals as much as possible.

Breakfast and lunch orders will be taken by the classroom teachers, as done in prior years, and submitted to the cafeteria electronically. Families may choose to order breakfast weekly or establish a standing order. Lunch is ordered daily.

# School Level Reentry Operations: Millbridge

## Conditions for Learning: Food Services and Distribution

Breakfast and lunch will be eaten in classrooms at the student's desk with social distancing practices in place.

Classrooms that have students with allergies will have desks cleaned using additional safety protocols after snack and recess. Parents of students without allergies are asked to adhere to the safe food lists for snacks.

Due to dietary needs, we recognize this would be difficult at lunch and encourage families of students without allergies to limit products containing allergens as much as possible.

Special arrangements will be made for students with documented airborne allergies.

At school, meals will be delivered to the classroom.

# School Level Reentry Operations (Millbridge)

Conditions for Learning: Quality Child Care

Establish relationships with vendors in Delran on behalf of families.

**DELRAN  
INTERMEDIATE  
SCHOOL**

# School Level Reentry Operations: DIS

## Operation 1: General Health & Safety Guidelines Pre-Arrival: Screening Visual Screening

Temperature checks (Students riding the bus as well as walkers): Digital wrist scanner will be stationed at each of the three entry points to take student temperatures as they enter the building.

Temperature checks (carpool): Prior to exiting their vehicles, students will have their temperature taken using the hand-held scanner.

Temperature checks (Staff): All Staff will enter through the main entrance and practice social distancing. Temperature checks will be conducted by nurse, office staff and/or administrator.

# School Level Reentry Operations (DIS): Health and Safety

## Operation 2: Classrooms, Testing & Therapy Rooms

### Physical organization

Desks 6 feet apart facing Promethean board; Perimeter remaining desks; utilize the inside and top of perimetered desks as a holding space for student daily belonging; social distancing and/or masks; Windows and doors open as necessary.

### Personal Belongings:

Coats, umbrellas, hats, bookbags, etc, stored in the cubbies. Extra consumables needed throughout the year stored in the top cubby and labeled with their name. Daily supplies i.e. pencils, markers, notebooks, workbooks, chromebooks, etc., stored in/on the shared desk. These supplies are brought to school and home everyday.

Hand sanitizer and sink with soap in each homeroom; Daily cleaning and disinfection of surfaces.

# School Level Reentry Operations (DIS)

## Operation 3: Transportation

Students to enter the bus and fill the back to front. After students and drivers become accustomed to the procedure (approx. 1-2 days) students assigned the same seat for arrival and dismissal.



# School Level Reentry Operations (DIS)

## Operation 4: Student Flow, Entry, Exit & Common Areas

## Arrival:

Car drop off: Expecting a heavier volume than normal. Allow students to enter starting 8:00am. Proceed into the building based on grade entrance way (color coded). Students will proceed to the classroom where teacher will welcome students into the class.

Bus riders: Two busses at a time will unload in a rolling fashion. Proceed into the building based on grade entrance way (color coded on sidewalk and with door signage). Enter the classroom practicing social distancing.

### Egress into the building

3rd grade enters through the main entrance (blue)

4th grade enters through the end of their exterior corridor (orange)

5th grade enters through the end of their exterior corridor (yellow)

# School Level Reentry Operations (DIS)

## Operation 4: Student Flow, Entry, Exit & Common Areas

### Egress Throughout the Building:

Signage and tape reminding students and staff about social distancing, hygiene, masks and walking direction (right side/ left side).

Signage in vestibule marking 6 feet.

### Destination Information

Strictly limit individual student movement (i.e. emergency bathroom, early pick up, etc.).

POR, BSI, ELL classes will primarily be taught in the homeroom. If pull out instruction is warranted, these students will be picked up by the teacher.

As a class to the bathroom (3-4 times whole class bathroom break)

As a class to and from recess (Playground/ field).

Nurse - teacher must call first if student is unescorted by a staff member.

Office - teacher must call first if student is unescorted by a staff member.

# School Level Reentry Operations (DIS)

## Operation 4: Student Flow, Entry, Exit & Common Areas

### Bathroom:

Students must practice proper hand washing after using the bathroom.

Bathrooming will be scheduled for the entire class: 2 breaks before lunch/ 2 breaks after lunch.

This is subject to change based on special and lunch period.

2 students in, 2 students out policy.

Approx. 40 minutes set aside in the school day for this procedure. Teacher can use this extended time as an opportunity to embed SEL relationship building between peers and teacher. Use of outdoor space playground field weather permitting after use of bathroom is encouraged.

# School Level Reentry Operations: Health and Safety (DIS)

## Operation 4: Student Flow, Entry, Exit & Common Areas Recess/ Playground:

Recess takes place in the field and blacktop.

No balls or equipment/ jungle gym/ swings.

Classrooms assigned to designated space for fresh air (spray painted/ cones/ flags designate class space)

# School Level Reentry Operations: Health and Safety (DIS)

## Operation 4: Student Flow, Entry, Exit & Common Areas

Office/ Faculty Room/ Gym:

### \*Office & Copy Room:

Parents/Guardians signing out students will remain in the vestibule and wear a mask.

Additional Pens for sign out.

6' markings

Partitions will be installed around main office desks.

Limited usage in copy room not to exceed 2 staff members at once.

### \*Faculty Room:

Limited usage not to exceed 5 staff members at once. This includes eating space, use of copy machines and prep space.

### \*Gymnasium:

Used as additional teacher space for prep, lunch periods

Additional uses TBD

\*Masks must be worn by staff and spaces wiped down after usage.

# School Level Reentry Operations: Health and Safety (DIS)

## Operation 4: Student Flow, Entry, Exit & Common Areas

### Dismissal

Pack up procedure begins at 2:45.

Students must wash hands/use hand sanitizer before leaving the classroom.

The egress and procedures will be monitored by the staff on duty to ensure social distancing and appropriate behavior.

### Busses

As the individual bus arrives, the bus letter will be called over the loudspeaker. Once all students have boarded, they depart. No more than two busses called at a time beginning with the front of the bus line. Students will not be dismissed en masse by brown loop/gold loop

### Carpool

Dismiss by grade level throughout the doors that they enter in the morning. Announcement will be made by grade level.

# School Level Reentry Operations: Health and Safety (DIS)

## Operation 5: Screening, PPE, Response to Students & Staff Presenting Symptoms

Screening:

[Google Form daily parent certification](#) (Draft)

Temperature checks at building entries (Students)

Staff stationed at each entry way to administer temp checks to car drop off students.

Temperature checks at building entries (Staff) Staff enter the main office practicing social distancing. Temp check administered by nurse, office staff and/or administrator.

# School Level Reentry Operations: Health and Safety (DIS)

## Operation 5: Screening, PPE, Response to Students & Staff Presenting Symptoms

### PPE:

Staff and visitors must wear face coverings unless doing so would inhibit the health of the individual.

Students are highly encouraged to wear face coverings while in the building. Individual plans will be created to address situations when staff or students cannot wear face coverings due to circumstances.

School will provide face coverings when necessary.

PPE can include but is not limited to cloth masks, plastic face guards, gloves, etc...



# School Level Reentry Operations: Health and Safety (DIS)

## Operation 5: Screening, PPE, Response to Students & Staff Presenting Symptoms

Nurse will provide necessary Covid-related training to staff

- Understand signs and symptoms of Covid and coordinate action plan for suspected or positive case
- Health Office examination room will be used to quarantine a child
- Nurse will contact parent/guardian to pick-up immediately

# School Level Reentry Operations: Health and Safety (DIS)

## Operation 5: Screening, PPE, Response to Students & Staff Presenting Symptoms

Nurse, staff and administration will:

Establish an isolation space. In the nurse examination room. Students and staff with symptoms related to COVID-19 must be safely and respectfully isolated from others.

Students should remain in isolation with continued supervision and care until picked up by an authorized adult. Follow current Communicable Disease Service guidance for illness reporting. Adequate amount of personal protective equipment (PPE) available, accessible, and provided for use.

Develop methods to assist in contact tracing including records of groups/cohorts, assigned staff, and daily attendance. Continuous monitoring of symptoms.

# School Level Reentry Operations: Health and Safety (DIS)

## Operation 6: Contact Tracing

As determined by the township and the district based on CDC and NJDOH guidelines

# School Level Reentry Operations: Health and Safety (DIS)

## Operation 7: Facilities Cleaning Practices

### Where?

High touch surfaces i.e. desks, door knobs, front doors, walls, tables, sinks, bathrooms, etc...

### When?

Before and after lunch, after dismissal and in between use as needed.

Hands washed when finished in the bathroom, when re-entering the classroom and as needed after coughing or sneezing.

### Who?

Students are responsible for cleaning practices before and after eating or coughing and sneezing.

Teachers as deemed necessary.

Maintenance crew during school hours, cleaning crew after hours

# School Level Reentry Operations: Health and Safety (DIS)

## Operation 8: Meals

### Breakfast

Order and count taken as a Google Sheet as morning routine. Teacher shares the document with kitchen supervisor virtually. Designate one student to retrieve breakfast cart from the cafeteria. Upon returning to class, student must wash hands. Cart handle must be wiped down after each use. Students must wash hands after eating. Desk wiped down.

### Lunch

This is the teacher's lunch as well.

CMAs will be responsible for retrieving and returning lunch carts from cafeteria. Room number labeled on cart.

Use of CMAs and lunch aides to supervise the classroom and recess space.

Students must wash hands before and after eating.

Desks wiped down.

# School Level Reentry Operations: Health and Safety (DIS)

## Operation 9: Recess/ Physical Education

### Recess:

Recess takes place in the field and blacktop. No balls or equipment/ jungle gym/ swings.

Classrooms assigned to designated space for fresh air (spray painted/ cones designated class space).

During inclement weather, recess will be held in the classroom.

### Physical Education

P.E. will take place in a combination of settings. Weather permitting, P.E. will be held outside in homeroom designated areas. During inclement weather, classes will be held in the classroom.

# School Level Reentry Operations: Health and Safety (DIS)

## Operation 10: Field Trips, Extra-curricular Activities, & Use of Facilities Outside of School Hours

No In-Person Field Trips

Extra-curricular Activities: Only band instruction during school hours. Extra-curricular activities will be revisited in January, 2021

After School Clubs:

Clubs will be examined in January, 2021

# School Level Reentry Operations (DIS)

## Operation 10: Use of Facilities After School Hours:

YMCA- Prime Time Before and After Care

Evening and Saturday Basketball: No facility usage for outside groups until review in 2021.



# School Level Reentry Operations (DIS)

## Conditions for Learning: Academic, Social and Behavioral Supports

### Intervention and Referral Services

- I&RS team will meet to identify students in need of support
  - Offer tiered interventions to assist students
- **Special Education**
  - Students will receive programming aligned to their IEPs. Small group and individual instruction will be provided via Google Meet on days when students are working remotely. CST will continue to assess students and update IEPs as needed
- **Basic Skills Instruction and Remedial Reading**
  - Students will continue to be identified and placed in BSI Math, ELA and Remedial Reading classes
  - BSI teachers are available to support those student with small group and individual Google Meets
- **ESL**
  - Voiance translators will assist in connecting students to their teachers
  - ESL teachers will identify students needing support and the administration will support as needed

# School Level Reentry Operations (DIS)

## Conditions for Learning: Social & Emotional Learning / School Climate and Culture

There will be embedded time within the in person scheduled days for teachers to allow students to connect with one another on a social level and with the teacher as well while practicing social distancing.

- *Move This World* Social Emotional Learning program utilized to allow students opportunities to use physical movement and creative expression to help students and educators develop emotional intelligence skills for long-term wellbeing.
- Guidance counselors will form and meet with groups and individuals.
- Groups will be developed to approach issues such as isolation, bullying, grief, trauma, mental health, bias, prejudice, and anxiety
- Counselors and CST members are available to support students at school and remotely.
- Community organizations and services will be provided to families in need of supports outside of DIS.
- Students of the Month and those students displaying positive character traits will be recognized.
- The district wellness coaches are available to support any staff member in need of support.
- The DIS SLT will work to identify areas in which the staff can promote self-care and wellness.

# School Level Reentry Operations (DIS)

## Conditions for Learning: Multi-Tiered Systems of Support

An RTI (Response for Intervention) system is utilized. Tier I accommodations and supports are available for all students. Tier II and Tier III supports are available to students, as needed.

A rubric is used to determine student eligibility for basic skills and remedial reading.

NJDOE criteria is utilized to determine eligibility for ESL and Special Education services.

An I&RS (Intervention and Referral Services) team is available to help support students who are not responding to intervention and who need additional support. All school-initiated referrals to the child study team are made by this team of educators.

# School Level Reentry Operations (DIS)

## Conditions for Learning: Wrap Around Supports

- Administration, teachers, counselors and CST will continue to formally and informally evaluate students in danger of self-harm and negative social behavior.
- Contact information for county mental health services will be provided to families.
- Administration, teachers, counselors and CST will continue to touch base with struggling students and their families.
- Delran Police Department will assist in reaching at risk students in crisis
- Perform Care & DCP&P will be utilized as necessary.

# School Level Reentry Operations: Food Service (DIS)

## Conditions for Learning: Food Services and Distribution

Should be limited to pre-packaged and bagged meals as much as possible.  
Breakfast and Lunch will be eaten in classrooms.

Food distribution to the students that are not attending in person on the remote days will be organized with pick up locations at DMS & DHS.

# School Level Reentry Operations: Food Service (DIS)

## Breakfast

Order and count taken as a Google Sheet as morning routine.

Teacher shares the document with kitchen supervisor electronically.

Designate one student to retrieve breakfast cart from the cafeteria.

Upon returning to class, student must wash hands. Students must wash hands after eating.

Desk wiped down.

## Lunch

This is the teacher's lunch as well.

CMAs will be responsible for retrieving and returning lunch carts from cafeteria.

Room number labeled on cart.

Use of CMAs and lunch aides to supervise the classroom and recess space.

Students must wash hands before and after eating.

Desks wiped down.

# School Level Reentry Operations (DIS)

Conditions for Learning: Quality Child Care

Establish relationships with vendors in Delran on behalf of families.

**Conditions for Learning**

Conditions for learning involve the social and emotional and environmental factors that can impact educator capacity to teach and student capacity to learn, including standards for maintaining healthy and safe school conditions.

- Districts must organize and prepare for the next school year acknowledging the potential trauma that staff and students have faced during the COVID-19 school closures.
- To optimize the learning process, students and staff need to feel cared for, reengaged, and acclimated to the school community, so schools can deliver instruction most effectively.
- Provide professional development to support educators' integration of SEL in their teaching, including the skills to foster positive learning environments and techniques for embedding SEL into in-person or virtual instruction.
- Districts should seek to actively include families and students in the decision-making process, teams, and meetings regarding interventions and supports.

For more information please visit <https://bit.ly/NJDOEtheRoadBack> to view "The Road Back: New Jersey's Restart and Recovery Plan for Education"

**DELRAN MIDDLE  
SCHOOL**



# School Level Reentry Operations: Health and Safety (DMS)

## Operation #1 Conditions for Learning: Health and Safety





- General Health and Safety
  - Promote positive hygiene habits
    - Signs posted throughout the school
    - Cafeteria bulletin board
    - Teachers will remind students
    - Students will wear masks during transitions
      - Moving throughout classrooms
      - Hallways
      - Entering and exiting busses and building
    - Increased teacher duties in hallways/bathrooms
    - Directional arrows in hallway and common areas

# School Level Reentry Operations: Health and Safety (DMS)

## Operation #1 Conditions for Learning: Health and Safety

- General Health and Safety
  - Reasonably accommodate students and staff who are at higher risk for severe illness.
    - Remote instruction when applicable
      - Doctor's note stating the need for remote instruction
    - Remote faculty would instruct cohorts of remote students
    - Teachers may be teaching different grade levels if necessary
    - If necessary, teachers may teach remotely from home to students in a classroom
      - Substitute teacher would act as proctor and behavior manager

**Conditions for Learning**  
Conditions for learning involve the social and emotional and environmental factors that can impact educator capacity to teach and student capacity to learn, including standards for maintaining healthy and safe school conditions.

-  Districts must organize and prepare for the next school year acknowledging the potential trauma that staff and students have faced during the COVID-19 school closures.
-  To optimize the learning process, students and staff need to feel cared for, reengaged, and acclimated to the school community, so schools can deliver instruction most effectively.
-  Districts should seek to actively include families and students in the decision-making process, teams, and meetings regarding interventions and supports.
-  Provide professional development to support educators' integration of SEL in their teaching, including the skills to foster positive learning environments and techniques for embedding SEL into in-person or virtual instruction.

For more information please visit <https://doe.nj.gov/DOE/About/Back> to view "The Road Back: New Jersey's Restart and Recovery Plan for Education"

# School Level Reentry Operations: Health and Safety (DMS)

## Operation #2 Conditions for Learning: Health and Safety

- Classrooms, Testing, and Therapy Rooms
  - Each classroom has been measured and can safely socially distance 50% of each class
  - Students will travel in cohorts, with limited interaction from other groups
    - Lessens the amount of cross-contamination between groups of students
    - Due to unique scheduling needs, such as accelerated placement or IEP programs, some students may move in and out of multiple cohorts
  - Six feet between desks (facing forward)
  - Masks worn by teacher(s)
  - Students will wipe down desks with anti-bacterial wipes as they enter class
  - Masks will be worn when students enter, exit, or move throughout classrooms
  - Anti-bacterial spray will be available in each classroom
  - No group work in close proximity (Online collaboration is ideal)

# School Level Reentry Operations: Health and Safety (DMS)

## Operation #2 Conditions for Learning: Health and Safety

- Classrooms, Testing, and Therapy Rooms
  - Teachers are asked to open exterior doors & windows to allow air circulation
  - No sharing of communal supplies: Students store their supplies in backpacks
  - Lockers will not be used
  - Multi-student tables will be replaced by individual seating
    - Students will observe six feet spacing at lab tables
    - Labs may consist of demonstrations or investigations
  - Teachers are encouraged to take classes outside for lessons, when appropriate

# School Level Reentry Operations: Health and Safety (DMS)

## Operation #3 Conditions for Learning: Health and Safety

- Transportation/Arrival (Bussing)
  - Request that parents drop off and/or pick up their children from school if possible
  - 22 students per bus, socially distanced
    - Family members will share seats, increasing bus capacity
  - Students will face forward in their seats

# School Level Reentry Operations: Health and Safety (DMS)

## Operation #3 Conditions for Learning: Health and Safety

- Transportation/Arrival (Bussing)
  - Two duty teachers will evaluate students as they get off the bus
    - Students with temperatures over 100.4 must be picked up
    - Teachers will screen students to determine if other symptoms are present
    - Staff member will relay the students' names to the main office
    - Attendance secretary will contact the family to confirm pickup
  - Buses arriving prior to 7:15 will hold students until 7:15 and unload one at a time
  - Buses arriving after 7:15 will unload when directed by duty teacher
  - Students will go to first period
  - Bussed students may purchase a *Grab and Go* breakfast in the cafeteria
    - Food will be eaten in the first period classroom

# School Level Reentry Operations: Health and Safety (DMS)

## Operation #3 Conditions for Learning: Health and Safety

- Transportation/Arrival (Parent Drop Off/Walkers)
  - Parents are asked to wait for screening prior to departing DMS
    - Two duty teachers will take the temperature of students
      - Temperatures over 100.4 will need to return home
      - Teachers will screen students to determine if other symptoms are present
      - If necessary, staff member will relay the students' names to the main office
      - Attendance secretary will contact the family to confirm pickup
    - 7th and 8th graders will be housed in the gym prior to 7:15am
    - Seating will be clearly marked for social distancing
    - Students may purchase a breakfast in the cafeteria and proceed to gym
    - 6th Graders will be housed in the cafeteria prior to 7:15am
      - Students may purchase breakfast and eat in the cafeteria

# School Level Reentry Operations: Health and Safety (DMS)

## Operation #3 Conditions for Learning: Health and Safety

- Transportation/Dismissal
  - Students will not be using lockers
  - Masks must be worn by students and staff
  - Teachers will escort classes to the busses
  - Dismiss directly out exterior classroom or hallway doors in front of building
  - Walk directly to busses, parent pickup, or walk home
- End of 10th Period
  - 1:27 pm Afternoon Announcements
  - Announcements during 10th period will allow additional time for dismissal



# School Level Reentry Operations: Health and Safety (DMS)

## Operation #3 Conditions for Learning: Health and Safety

- Transportation/Dismissal
  - End of 11th Period (11th Period teacher will escort classes to busses)
    - Office secretary will announce each groups dismissal in the following order:
      - 2:12 6th Grade odd numbered classrooms
      - 2:13 6th Grade even numbered classrooms
      - 2:14 7th Grade odd numbered classrooms
      - 2:15 7th Grade even numbered classrooms
      - 2:16 8th Grade odd numbered classrooms
      - 2:17 8th Grade even numbered classrooms
  - Fill in busses from back to front

# School Level Reentry Operations: Health and Safety (DMS)

## Operation #4 Conditions for Learning: Health and Safety

- Student Flow, Entry, Exit, and Common Areas
  - Staff health screenings
    - Staff will enter through the main entrance and be immediately screened
    - Staff should wear masks
  - Student health screenings
    - Students will wear masks as they disembark busses and cars
    - Dropped off students will be screened by one of four duty teachers
    - A duty teacher will relay names of parents to be contacted
    - Pop up tents provided for inclement weather
    - Social distancing will be observed
  - Gym and cafeteria entrances will be used
  - Students will proceed to first period
  - Hand sanitizer available at all entrances

# School Level Reentry Operations: Health and Safety (DMS)

Operation #5: Screening, PPE, Response to Students & Staff Presenting Symptoms

Screening:

- Bus drivers/aides will take the temperature of each student entering the bus
  - Students with temperatures over 100.4 will be asked to return home
  - Driver will notify staff member on duty upon arrival.
  - Staff member will relay the students' names to the main office
  - Attendance secretary will contact the family to confirm

# School Level Reentry Operations: Health and Safety (DMS)

Operation #5: Screening, PPE, Response to Students & Staff Presenting Symptoms

Screening:

- Parent drop off/walkers and duty teacher screening
  - Teacher will screen students to determine if symptoms are present
  - Duty Teachers will take the temperature of each student
    - Temperatures over 100.4 will be sent to the nurse for parent pickup
- Staff health screenings
  - Staff will enter through the main entrance and be immediately screened
  - Temperatures will be taken and they will be asked about symptoms
  - Staff should wear masks

# School Level Reentry Operations: Health and Safety (DMS)

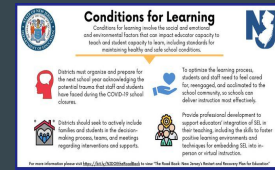
## Operation #5: Screening, PPE, Response to Students & Staff Presenting Symptoms

Nurse will provide necessary Covid-related training at opening day staff meeting

- Understand signs and symptoms of Covid and coordinate action plan for suspected or positive case
- Health Office examination room will be used to quarantine a child
- Nurse will contact parent/guardian to pick-up immediately

Nurse, staff and administration will:

- Establishment of an isolation space. Students and staff with symptoms related to COVID-19 must be safely and respectfully isolated from others.
- Students should remain in isolation with continued supervision and care until picked up by an authorized adult. Follow current Communicable Disease Service guidance for illness reporting. Adequate amount of personal protective equipment (PPE) available, accessible, and provided for use.
- Develop methods to assist in contact tracing including records of groups/cohorts, assigned staff, and daily attendance. Continuous monitoring of symptoms.



# School Level Reentry Operations (DMS): Health and Safety

## Operation #6: Contact Tracing

- As determined by the township and the district based on CDC and NJDOH guidelines.

## Operation #7: Facilities Cleaning Practices

- High traffic touch points will be disinfected throughout the day
- Classroom doors will remain open to avoid the use of door knobs
- Cafeteria tables and seats will be disinfected between periods
- Classroom desks and chairs will be disinfected after school
- Students will wash their hands on the return from lunch
- Masks will be provided for staff and students if needed
- Anti-bacterial wipes will be purchased for each classroom
  - Students will wipe desks and seats before exiting classes
- Bathrooms will be periodically cleaned throughout the day

# School Level Reentry Operations (DMS): Health and Safety

## Operation #8: Meals

- Breakfast
  - Students may purchase a grab and go breakfast upon entering the cafeteria
  - Bussed students will eat in first period
  - Parent drop off and walkers
    - 7th and 8th graders in gym
    - 6th graders in cafeteria
- Lunch
  - Lunch will be held in the cafeteria
  - Grab and go only
  - Students will sit in marked off seats
  - Tables and seats will be disinfected between lunch periods
  - Students must wash their hands before returning to class.

## Operation #9 Recess/Physical Education

- Recess: N/A
- Physical Education
  - Locker room will not be used
  - Students should wear sneakers and work out clothing for PE each day
  - No balls or shared equipment
  - SEL curriculum will be infused in PE
  - Gym floor will be marked for social distancing

# School Level Reentry Operations (DMS): Health and Safety

Operation #10: Field Trips, Extra-Curricular Activities & Use of Facilities Outside of School Hours

- No field trips will be organized at this time; will review in January 2021
- No fall Extra-Curricular Activities, sports, or clubs; will review in January 2021
- Band Instruction (Woodwind and Brass will not play in school)
  - 6th Grade cycle
  - 7th & 8th BEAR Period in-person
  - Virtually on remote days
- Use of Facilities After School Hours
  - Delran Athletic Association Facility Usage Not Operational; Will be reevaluated January 2021



# School Level Reentry Operations: Academic Support (DMS)

## Conditions for Learning: Academic, Social and Behavioral Supports

- **Intervention and Referral Services**
  - I&RS team will meet to identify students in need of support
    - Offer tiered interventions to assist students
- **Special Education**
  - Students will receive remedial help through small group and individual Google Meets
  - CST will continue to assess students and update IEPs as needed
- **Basic Skills Instruction**
  - Students will continue to be identified and placed in BSI Math and ELA classes
  - BSI teachers are available to support those student with small group and individual Google Meets
- **ESL**
  - Voiance translators will assist in connecting students to their teachers and DMS
  - ESL teacher will identify students needing support and the administration will support as needed

# School Level Reentry Operations: School Culture (DMS)

## Conditions for Learning: Social & Emotional Learning / School Climate and Culture

- Live Google meets will provide a venue for students to interact with staff and peers which they may not have seen in several months
- Social Emotional Learning curricula will be taught in PE classes
- Parents, staff, and students will be surveyed to measure the need for certain support groups
  - Groups will be developed to approach issues such as isolation, bullying, grief, trauma, mental health, bias, prejudice, and anxiety
  - Guidance counselors will form and meet with groups and individuals
- Activities and clubs will be reevaluated in January to create connectivity with school and peers
- Counselors and CST members are available to support students at school and remotely
- Community organizations and services will be provided to families in need of supports outside of DMS
- The DMS SLT will work to identify areas in which the staff can promote self-care and wellness.
- The district wellness coaches are available to support any staff member in need of support.
- Students of the Month and those students displaying positive character traits will be recognized

# School Level Reentry Operations: Systems of Support (DMS)

## Conditions for Learning: Multi-Tiered Systems of Support

- I&RS Team meets to identified tiered supports for students
  - If warranted, students will be referred to the CST for testing
- Supervisors have updated the criteria for basic skills placement
- ESL testing has resumed and NJDOE criteria is used to determine ESL program eligibility and exits
- CST will continue to test individual students and determine eligibility using the criteria set forth by the NJDOE

**Conditions for Learning**

Conditions for learning involve the social and emotional and environmental factors that can impact educator capacity to teach and student capacity to learn, including standards for maintaining healthy and safe school conditions.

- Districts must organize and prepare for the next school year acknowledging the potential trauma that staff and students have faced during the COVID-19 school closures.
- To optimize the learning process, students and staff need to feel cared for, reengaged, and acclimated to the school community, so schools can deliver instruction most effectively.
- Provide professional development to support educators' integration of SEL in their teaching, including the skills to foster positive learning environments and techniques for embedding SEL into in-person or virtual instruction.

For more information please visit <https://bit.ly/NJDOEtheRoadBack> to view "The Road Back: New Jersey's Restart and Recovery Plan for Education"

# School Level Reentry Operations: Wrap Around Services (DMS)

## Conditions for Learning: Wrap Around Supports

- Counselors and CST will continue to evaluate students in danger of self-harm and suicide
- Contact information for county mental health services will be provided to families
- Counselors and CST will continue to touch base with struggling students
- Delran Police Department will assist in reaching at risk students in crisis

**Conditions for Learning**

Conditions for learning involve the social and emotional and environmental factors that can impact educator capacity to teach and student capacity to learn, including standards for maintaining healthy and safe school conditions.

- Districts must organize and prepare for the next school year acknowledging the potential trauma that staff and students have faced during the COVID-19 school closures.
- To optimize the learning process, students and staff need to feel cared for, reengaged, and acclimated to the school community, so schools can deliver instruction most effectively.
- Districts should seek to actively include families and students in the decision-making process, teams, and meetings regarding interventions and supports.
- Provide professional development to support educators' integration of SEL in their teaching, including the skills to foster positive learning environments and techniques for embedding SEL into in-person or virtual instruction.

For more information please visit <https://bit.ly/NJDOEtheRoadBack> to view "The Road Back: New Jersey's Restart and Recovery Plan for Education"

# School Level Reentry Operations: Food Distribution (DMS)

- 50% Hybrid or 100% Remote Model
  - Free and reduced meal pickup must be arranged by district for remote days
- Breakfast
  - Students may purchase a grab and go breakfast upon entering the cafeteria
  - Bussed students will eat in first period
  - Parent drop off and walkers
    - 7th and 8th graders in gym
    - 6th graders in cafeteria
- Lunch
  - Lunch will be held in the cafeteria
  - Grab and go only
  - Students will sit in marked off seats
  - Tables and seats will be disinfected between lunch periods
  - Students must wash their hands before returning to class.





# School Level Reentry Operations (DMS)

Conditions for Learning: Quality Child Care

Establish relationships with vendors in Delran on behalf of families.

**Conditions for Learning**

Conditions for learning involve the social and emotional and environmental factors that can impact educator capacity to teach and student capacity to learn, including standards for maintaining healthy and safe school conditions.

-  Districts must organize and prepare for the next school year acknowledging the potential trauma that staff and students have faced during the COVID-19 school closures.
-  To optimize the learning process, students and staff need to feel cared for, reengaged, and acclimated to the school community, so schools can deliver instruction most effectively.
-  Provide professional development to support educators' integration of SEL in their teaching, including the skills to foster positive learning environments and techniques for embedding SEL into in-person or virtual instruction.
-  \* Districts should seek to actively include families and students in the decision-making process, teams, and meetings regarding interventions and supports.

For more information please visit <https://bit.ly/NJDOEtheRoadBack> to view "The Road Back: New Jersey's Restart and Recovery Plan for Education"

# DELRAN HIGH SCHOOL

# School Level Reentry Operations (DHS)

## Operation 1: General Health & Safety Guidelines Pre-Arrival: Screening

ALL students and staff MUST HAVE their school ID in order to enter the building.

Temperature checks (Students riding the bus): District is working with the bus company, First Student, to perform temperature checks as kids get on the bus. Masks must be worn. Maximum students on a bus will be 22.

Temperature checks (Students not riding bus): Staff will be stationed at entrances to administer temperature checks to students who walk or who arrive via car. Students must wear a mask that covers their nose and mouth.

Temperature checks (Staff): All Staff will enter through the main entrance and practice social distancing. Temperature checks will be conducted by nurse, office staff and/or administrator.



# School Level Reentry Operations (DHS)

## Operation 2: Classrooms, Testing, and Therapy Rooms

Lockers WILL NOT be used. This decision will be revisited in January of 2021.

All classrooms is equipped with hand sanitizer for use. Students will be reminded regularly to use the hand sanitizing station.

All desks will be placed 6 feet apart facing the front of the classroom where possible.

Windows and doors will be kept open as appropriate.

All students will sanitize his/her desk upon entering the classroom with provided supplies.

All students will wear a mask until directed by the teacher. At times, due to circumstances, students may be asked to wear their mask throughout the entire class for safety.

Students must stay seated throughout the class; however, if they need to use the restroom or get a tissue, sharpen a pencil, etc. a mask must be worn.

# School Level Reentry Operations (DHS)

## Operation 2: Classrooms, Testing & Therapy Rooms

General: Daily cleaning and disinfection of all surfaces will occur nightly. Additional cleaning will occur throughout the day, in particular, all touch points will be disinfected multiple times throughout the day. Bathrooms will be cleaned regularly throughout the day.

Staff will regularly remind students and reinforce good hygiene practices.

Initiatives for public announcements and information regarding ways to promote good hygiene.

# School Level Reentry Operations (DHS)

## Operation 3: Transportation, Arrival and Dismissal

Depending on the route and rider capacity, the probability of social distancing being maintained is highly unlikely. This will require ALL students to wear masks both at the bus stops and while on the bus if they are unable to provide 6 feet of distance between themselves and others.

Students will enter the bus and fill the back to front (except for reserved, assigned seats due to need). After students and drivers become accustomed to the procedure (approx. 2 weeks) students will be assigned the same seat for both arrival and dismissal.

There will be NO late busses.

# School Level Reentry Operations (DHS)

## Operation 3: Transportation, Arrival and Dismissal

Car drop off /Walkers /Drivers: Starting at 6:45 am, students will be allowed to enter DHS. All students arriving BEFORE 7:15 must be dropped off at the far end of the parking lot, nearest the tennis courts and will enter through the door to the Auxiliary Gym. Temperatures will be checked at this time and students will be held until 7:15 in a socially distanced environment.

Car drop off /Walkers /Drivers: At 7:15 am, students are to be dropped off at the front(Board Office Lot) and back lobby entrances. Temperatures will be checked at this time.

Bus-Riders: Students will unload the buses and go directly into the cafeteria providing distance between themselves and the person both in front and behind themselves.

# School Level Reentry Operations (DHS)

## Operation 4: Student Flow, Entry, Exit & Common Areas Arrival: Egress into the building

Prior to 7:15, bus students will enter into the cafeteria and those driving or being dropped off will enter into the auxiliary gym. Both areas will have breakfast available in a grab and go format.

Between 7:15 and 7:30, all students will enter through the main lobby doors.

# School Level Reentry Operations (DHS)

## Operation 4: Student Flow, Entry, Exit & Common Areas Arrival:

Students will transition to each classroom on his/her schedule.

Hallways will be designated as one-way wherever possible. Where this cannot be accomplished, designation will be made as to which side of the hallway a student is to walk.

All stairwells will be designated as either up or down and marked as such.

Students who need to visit the main office, nurse, guidance, etc. must be given a pass.

## Egress out of the building-

Students will be dismissed by zone to exit the building. No students shall remain in the building after 2:30 unless under the guidance of an adult. There will be no late busses running.

# School Level Reentry Operations (DHS)

## Operation 4: Student Flow, Entry, Exit & Common Areas Arrival

### Main Entrance Area for Parents (later arrivals and early dismissals)

- Parents/Guardians signing out students will remain in the vestibule and wear a mask.
- Only one parent will be admitted into the vestibule at a time. Six foot markings will be designated outside for people waiting to enter the building.
- Visitors will use a sanitizer station before using the visitor entry system. System and sanitizing station will be disinfected regularly.
- Only parents with appointments will be allowed entry into the building.

### Main Office

- Other than office staff, only one person will be permitted to be in the main office at any given time.
- Main office staff's work stations will be situated to maintain social distancing.

# School Level Reentry Operations (DHS)

## Operation 4: Student Flow, Entry, Exit & Common Areas Arrival (cont'd): Faculty Rooms

- Areas that allow social distancing will be designated in the school for staff to use.
- These areas will be disinfected at regular intervals. Disinfectant will be available for staff use.
- Staff must maintain social distancing in these areas at all times.

## Copiers

- Bulk copying will be utilized whenever possible.
- Staff will maintain social distancing when waiting for the copier. Faculty has access to copiers in the faculty room, Room 230, and the Media Center only. The main office copier is only for main office use.
- Staff must wipe copier touch points down after each use.



# School Level Reentry Operations: Health and Safety (DHS)

## Operation 5: Screening, PPE, Response to Students & Staff Presenting Symptoms and PPE:

All students and staff will have their temperature checked daily prior to entering the building.

Staff and visitors must wear face coverings unless doing so would inhibit the health of the individual.

Should a student or staff member register a temperature of 100.4°F, they will be isolated in the Health Office in one of two closed examination rooms. Parents will be notified and asked to immediately pick up the student. Medical clearance is required for reentry to the school.

# School Level Reentry Operations: Health and Safety (DHS)

## Operation 5: Screening, PPE, Response to Students & Staff Presenting Symptoms and PPE:

Students will be asked to wear a mask while in all common areas, hallways, and at recess. Students will also be asked to wear masks when unable to maintain social distancing in the classroom.

Students will be able to remove masks once they are at their desk or table.

Individual plans will be created to address situations when staff or students cannot wear face coverings due to circumstances.

School will provide face coverings when necessary.

PPE can include but is not limited to cloth masks, plastic face guards, gloves, etc.

# School Level Reentry Operations: Health and Safety (DHS)

## Operation 5: Screening, PPE, Response to Students & Staff Presenting Symptoms and PPE (cont'd):

Nurse will provide necessary Covid-related training at opening day staff meeting

- Understand signs and symptoms of Covid and coordinate action plan for suspected or positive case
- Health Office examination rooms will be used to quarantine a child
- Nurse will contact parent/guardian to pick-up immediately

# School Level Reentry Operations: Health and Safety (DHS)

## Operation 5: Screening, PPE, Response to Students & Staff Presenting Symptoms and PPE (cont'd):

Nurse, staff and administration will:

Establish space in the event of needed isolation.

- Students and staff with symptoms related to COVID-19 must be safely and respectfully isolated from others.
- Students/staff should remain in isolation with continued supervision and care until picked up by an authorized adult. Follow current Communicable Disease Service guidance for illness reporting. Adequate amount of personal protective equipment (PPE) available, accessible, and provided for use.

Develop methods to assist in contact tracing including records of groups/cohorts, assigned staff, and daily attendance. Continuous monitoring of symptoms.

# School Level Reentry Operations: Health and Safety (DHS)

## Operation 5: Screening, PPE, Response to Students & Staff Presenting Symptoms and PPE (cont'd):

Signs will be posted throughout the building reinforcing good hygiene practices and ways to reduce the spread of CoVid-19, such as hand washing, wearing masks, social distancing, etc.

## Operation 6: Contact Tracing

Contact tracing will be determined by the township and the district based on CDC and NJDOH guidelines.

# School Level Reentry Operations: Health and Safety (DHS)

## Operation 6: Contact Tracing

As determined by the township and the district based on CDC and NJDOH guidelines

# School Level Reentry Operations: Health and Safety (DHS)

## Operation 7: Facilities Cleaning Practices

All classrooms, common areas, student desks, and cubbies will be thoroughly cleaned prior to student use.

High touch surfaces, such as door knobs, sinks, etc... will be cleaned by maintenance staff throughout the day.

Lavatories, common areas, and rooms used for related students will also be cleaned throughout the day as necessary.

Students will disinfect his/her desk upon entry to each classroom.

Wednesdays will see a deep clean throughout the day.

# School Level Reentry Operations: Health and Safety (DHS)

## Operation 8: Meals

Families are encouraged to utilize pre-packaged and bagged meals as much as possible. Meals provided by the school will be individually plated or in pre-packed boxes or bags: grab and go style.

Measurements completed at the DHS Cafe using six foot social distancing.

Using the current furniture and infrastructure, DHS can host 80 students at one time with two students per table. With the hybrid schedule, we would utilize the auxiliary gym as a secondary eating area outfitted with tables, chairs, and mobile food carts.

DHS Lunch Plan: Four lunch periods with an average of 117 students



# School Level Reentry Operations: Health and Safety (DHS)

## Operation 8: Meals

Only the number of chairs allowed will be present in the cafeteria and Aux. Gym

Tables and chairs will be disinfected between lunch periods

Students must sanitize their hands before returning to class

Free and Reduced meal pickup must be arranged by the district for remote days

# School Level Reentry Operations: Health and Safety (DHS)

## Operation 9: Physical Education and Health

Physical Education will be held each day during the 1st and 4th Marking Periods.

Health will be held each day during the 2nd and 3rd Marking Periods.

Students WILL NOT change for gym class and will not be issued a locker. Class will be held outside, weather permitting, and be at an appropriate social distance.

Social Emotional Learning principles will be a cornerstone of the courses to support each and every student.

# School Level Reentry Operations: Health and Safety (DHS)

## Operation 10: Field Trips, Extra-curricular Activities, and use of Facilities Outside of School Hours

All field trips will be virtual and this decision will be reviewed in January of 2021.

All clubs and activities are suspended and will be reviewed in January of 2021.

All sports will follow the guidance of the NJSIAA.

All school facilities will be closed to students and the public both before and after school hours unless approved by the Superintendent of Schools.

Late Busses are suspended and will be reviewed in January of 2021.

# School Level Reentry Operations: Systems of Support (DHS)

## Conditions for Learning: Social & Emotional Learning and School Culture and Climate

The social and emotional health and wellbeing of our staff and students is at the forefront of our decisions. These must be addressed before academic learning can successfully occur.

The School Leadership Team will continue to monitor both student and staff well-being and make appropriate decisions as to changes that may be necessary to promote health and safety for every member of the community.

Each student will be scheduled for a Study Hall to enable the Guidance Department to have regular contact with students both as a small group and individually. This will occur whether we are in the hybrid model or remote.

# School Level Reentry Operations: Systems of Support (DHS)

## Conditions for Learning: Social & Emotional Learning and School Culture and Climate

The Physical Education curriculum will include Social and Emotional Learning to support all students and to give them more understanding of the feelings that many of them are having.

We will continue to partner with and utilize community organizations and resources to support families.

The district leadership team and each school's leadership team will work to develop measures that promote self-care and provide support as needed for all staff.

DHS will communicate with you on a regular basis through the district email system.

# School Level Reentry Operations: Systems of Support (DHS)

## Conditions for Learning: Multi-tiered Systems of Support

Students who have been identified as qualifying for ESL (English as a Second Language) services and Special Education will receive services as directed.

The District employs, ESL teachers, numerous special education teachers, BCBA's (Board Certified Behavior Analysts), speech therapists, occupational therapists and a physical therapist to support students that qualify for these services.

# School Level Reentry Operations: Systems of Support (DHS)

## Conditions for Learning: Multi-tiered Systems of Support

NJDOE criteria is utilized to determine eligibility for ESL and Special Education services.

An I&RS (Intervention and Referral Services) team is available to help support students who are not responding to intervention and who need additional support. Delran High School utilizes the Masonic Model which is a strength-based intervention approach using data and observations to support student social and emotional needs to prepare them to LEARN. All school-initiated referrals to the child study team are made by this team of educators.

# School Level Reentry Operations: Systems of Support (DHS)

## Conditions for Learning: Wraparound Supports

Counselors and CST will continue to evaluate students in danger of self-harm and suicide

Contact information for county mental health services will be provided to families

Counselors and CST will continue to touch base with struggling students

Delran Police Department will assist in reaching at risk students in crisis



# School Level Reentry Operations (DHS)

Conditions for Learning: Quality Child Care

Establish relationships with vendors in Delran on behalf of families.

**Conditions for Learning**

Conditions for learning involve the social and emotional and environmental factors that can impact educator capacity to teach and student capacity to learn, including standards for maintaining healthy and safe school conditions.

- Districts must organize and prepare for the next school year acknowledging the potential trauma that staff and students have faced during the COVID-19 school closures.
- To optimize the learning process, students and staff need to feel cared for, reengaged, and acclimated to the school community, so schools can deliver instruction most effectively.
- Provide professional development to support educators' integration of SEL in their teaching, including the skills to foster positive learning environments and techniques for embedding SEL into in-person or virtual instruction.
- Districts should seek to actively include families and students in the decision-making process, teams, and meetings regarding interventions and supports.

For more information please visit <https://bit.ly/NJDOEtheRoadBack> to view "The Road Back: New Jersey's Restart and Recovery Plan for Education"

# Our Goal

Our goal is to ensure every student, staff member and family has access to information regarding our educational re-integration.

